

# UC Davis

## UC Davis Previously Published Works

### Title

Na<sup>+</sup> channel function, regulation, structure, trafficking and sequestration

### Permalink

<https://escholarship.org/uc/item/1n45t1wz>

### Journal

The Journal of Physiology, 593(6)

### ISSN

0022-3751

### Authors

Chen-Izu, Ye  
Shaw, Robin M  
Pitt, Geoffrey S  
et al.

### Publication Date

2015-03-15

### DOI

10.1113/jphysiol.2014.281428

Peer reviewed

## WHITE PAPER

# Na<sup>+</sup> channel function, regulation, structure, trafficking and sequestration

Ye Chen-Izu<sup>1,2,3</sup>, Robin M. Shaw<sup>4</sup>, Geoffrey S. Pitt<sup>5</sup>, Vladimir Yarov-Yarovsky<sup>6</sup>, Jon T. Sack<sup>6</sup>, Hugues Abriel<sup>7</sup>, Richard W. Aldrich<sup>8</sup>, Luiz Belardinelli<sup>9</sup>, Mark B. Cannell<sup>10</sup>, William A. Catterall<sup>11</sup>, Walter J. Chazin<sup>12</sup>, Nipavan Chiamvimonvat<sup>3</sup>, Isabelle Deschenes<sup>13</sup>, Eleonora Grandi<sup>1</sup>, Thomas J. Hund<sup>14</sup>, Leighton T. Izu<sup>1</sup>, Lars S. Maier<sup>15</sup>, Victor A. Maltsev<sup>16</sup>, Celine Marionneau<sup>17</sup>, Peter J. Mohler<sup>18</sup>, Sridharan Rajamani<sup>9</sup>, Randall L. Rasmusson<sup>19</sup>, Eric A. Sobie<sup>20</sup>, Colleen E. Clancy<sup>1</sup> and Donald M. Bers<sup>1</sup>

<sup>1</sup>Department of Pharmacology, University of California, Davis, USA

<sup>2</sup>Department of Biomedical Engineering, University of California, Davis, USA

<sup>3</sup>Department of Internal Medicine/Cardiology, University of California, Davis, USA

<sup>4</sup>Department of Cardiology, Cedars-Sinai, Los Angeles, CA, USA

<sup>5</sup>Departments of Medicine, Neurobiology, Pharmacology and Cancer Biology, Duke University, Durham, NC, USA

<sup>6</sup>Department of Physiology and Membrane Biology, University of California, Davis, USA

<sup>7</sup>Department of Clinical Research, University of Bern, Bern, Switzerland

<sup>8</sup>Interdisciplinary Biomedical Research II, University of Texas at Austin, TX, USA

<sup>9</sup>Gilead Sciences, Fremont, CA, USA

<sup>10</sup>Department of Physiology and Pharmacology, University of Bristol, Bristol, UK

<sup>11</sup>Department of Pharmacology, University of Washington, Seattle, WA, USA

<sup>12</sup>Department of Biochemistry, Vanderbilt School of Medicine, Nashville, TN, USA

<sup>13</sup>Department of Physiology and Biophysics, Case Western Reserve University, Cleveland, OH, USA

<sup>14</sup>Department of Biomedical Engineering, Ohio State University, Columbus, OH, USA

<sup>15</sup>Klinik und Poliklinik für Innere Medizin II, Universitätsklinikum Regensburg, Germany

<sup>16</sup>National Institutes of Health, Baltimore, MD, USA

<sup>17</sup>L'Institut du Thorax, Université de Nantes, Nantes, France

<sup>18</sup>College of Medicine, Ohio State University, Columbus, OH, USA

<sup>19</sup>Department of Physiology and Biophysics, State University of New York at Buffalo, Buffalo, NY, USA

<sup>20</sup>Department of Pharmacology, Mount Sinai School of Medicine, New York, NY, USA

**Abstract** This paper is the second of a series of three reviews published in this issue resulting from the University of California Davis Cardiovascular Symposium 2014: *Systems approach to understanding cardiac excitation–contraction coupling and arrhythmias: Na<sup>+</sup> channel and Na<sup>+</sup> transport*. The goal of the symposium was to bring together experts in the field to discuss points of consensus and controversy on the topic of sodium in the heart. The present review focuses on Na<sup>+</sup> channel function and regulation, Na<sup>+</sup> channel structure and function, and Na<sup>+</sup> channel trafficking, sequestration and complexing.

(Received 24 July 2014; accepted after revision 2 November 2014)

**Corresponding author** Y. Chen-Izu: Department of Pharmacology, University of California, Davis, 451 Health Science Drive, Tupper Hall, Rm 2221, Davis, CA 95616, USA. Email: ychenizu@ucdavis.edu

**Abbreviations** AP, action potential; CaM, calmodulin; CaMKII, CaM-dependent protein kinase II; Cx43, connexin43; EAD, early afterdepolarization;  $E_m$ , membrane potential;  $I_{Na}$ , Na<sup>+</sup> current;  $I_{NaL}$ , the late Na<sup>+</sup> current; LQT3, long QT syndrome type 3; Na<sub>v</sub> channel, voltage-gated sodium channel; PD, pore-forming domain; VSD, voltage-sensing domain.

## Na<sup>+</sup> channel function and regulation

In the session on 'Na<sup>+</sup> channel function and regulation', presentations were given by Hugues Abriel, Ye Chen-Izu, Victor

Maltsev and Thomas Hund. Geoffrey Pitt led the discussion with panelists Eleonora Grandi, Randall Rasmusson, Lars Maier and Celine Marionneau. Below is a summary of

*the salient points and perspectives on the major issues and controversies in the field.*

Voltage-gated sodium channels ( $\text{Na}_V$ ) are responsible for initiation and propagation of the action potential (AP) in nerve, muscle and heart, where they are crucial determinants of many aspects of excitability and contraction. During the upstroke (phase 0) of the cardiac AP, cardiac  $\text{Na}_V$  channels open rapidly, creating a large spike of inward  $\text{Na}^+$  current ( $I_{\text{Na}}$ ) and then quickly transition into a non-conducting inactivated state. This inactivated state renders cardiomyocytes resistant to immediately firing a second AP, until the channels recover from inactivation (which requires time and negative membrane potential,  $E_m$ ). The activation and inactivation processes ensure the appropriate temporal and directional spread of electrical activity throughout the myocardium for the coordinated contraction necessary to propel blood throughout the body. While  $\text{Na}^+$  channels are in the inactivated state, cardiomyocytes are relatively protected from initiating afterdepolarizations and out-of-rhythm APs, thereby limiting electrical activity that may trigger arrhythmias. While the process above describes the situation for the majority of  $\text{Na}^+$  channels, there is a small probability that a fraction of channels do not remain inactivated, allowing them to re-open and/or stay open during the repolarization phase of the AP. The  $\text{Na}^+$  current resulting from these events is called the 'late'  $\text{Na}^+$  current ( $I_{\text{NaL}}$ ) or, alternatively, the 'persistent' or 'sustained' current (Maltsev *et al.* 1998) and is often distinguished as a separate component of  $I_{\text{Na}}$ .  $I_{\text{NaL}}$  has received increasing attention since it has been shown that selective inhibition of this current could prevent the emergence of arrhythmogenic APs (Maltsev *et al.* 2007; Zaza *et al.* 2008; Moreno & Clancy, 2012; Yang *et al.* 2012; Shryock *et al.* 2013).

**The late  $\text{Na}^+$  current ( $I_{\text{NaL}}$ ).** A description of the physiological and pathophysiological roles of  $I_{\text{NaL}}$  has been a major area of interest for many years, as  $I_{\text{NaL}}$  is significantly increased in pathophysiological states such as heart failure and it is tightly linked to arrhythmias (Undrovinas *et al.* 2002; Valdivia *et al.* 2005; Maltsev *et al.* 2007; Shryock *et al.* 2013; Antzelevitch *et al.* 2014). Gain-of-function mutations in *SCN5A* that encodes the major cardiac  $\text{Na}^+$  channel  $\text{Na}_V1.5$ , cause long QT syndrome type 3 (LQT3) by increasing  $I_{\text{NaL}}$  resulting in cardiac AP prolongation that could act as a substrate for arrhythmias (Bennett *et al.* 1995; Rivolta *et al.* 2001). However, what produces  $I_{\text{NaL}}$  and how it is regulated at the molecular level in cardiomyocytes are not fully understood.  $I_{\text{NaL}}$  can clearly be measured in the major cardiac  $\text{Na}_V1.5$  channel, even in heterologous systems;  $\beta$  subunits seem to be required for the effect (Mishra *et al.* 2011). However, specific inhibition of the  $\text{Na}_V1.8$  (*SCN10A*), which is not a major

contributor to peak  $I_{\text{Na}}$  in cardiac myocytes, has been shown to reduce cardiac  $I_{\text{NaL}}$  (Yang *et al.* 2012); so even the identity of the key channel subunits for  $I_{\text{NaL}}$  is incompletely resolved. Multiple attempts to dissect the identity of  $I_{\text{NaL}}$  in cardiomyocytes have been undertaken via electrophysiological and biophysical experimental techniques as well as by computational modelling approaches.  $I_{\text{NaL}}$  (Maltsev & Undrovinas, 2006) has been investigated in detail, including the contribution of the current to different arrhythmia mechanisms (early vs. delayed afterdepolarizations) (Undrovinas *et al.* 2002), its role in heart failure (Valdivia *et al.* 2005; Maltsev *et al.* 2007), and how various  $\text{Na}^+$  channel-associated proteins affect the development of  $I_{\text{NaL}}$ .

#### Question or controversy: the late $\text{Na}^+$ current

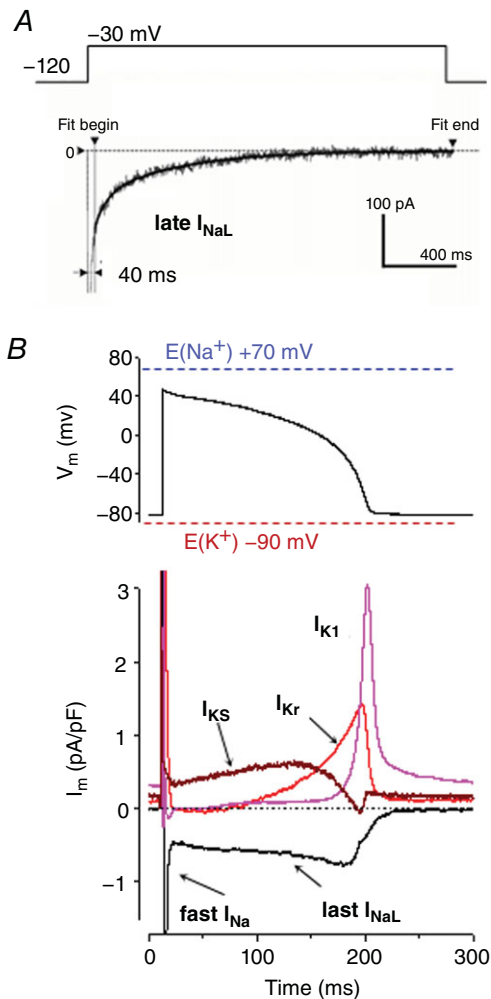
What are the mechanisms of  $I_{\text{NaL}}$ ?

How is  $I_{\text{NaL}}$  regulated in normal cardiac myocytes and in disease states?

Most studies of  $I_{\text{NaL}}$  in both myocytes and heterologous expression systems have assessed  $I_{\text{NaL}}$  using classical square pulse depolarizing step protocols as in Fig. 1A, and non-physiological ionic conditions to isolate  $I_{\text{NaL}}$  (Maltsev *et al.* 2007; Maltsev & Undrovinas, 2008). While such experimental approaches have been highly informative, the actual  $I_{\text{NaL}}$  may be quite different in a myocyte that experiences an AP with dynamic changes in  $E_m$ , intracellular  $[\text{Ca}^{2+}]$  and contraction under physiological conditions. Moreover,  $\text{Na}^+$  channels in cardiomyocytes are also anchored by large macromolecular complexes and are thus interacting with many regulatory proteins not present in heterologous expression systems (Nerbonne & Kass, 2005; Shy *et al.* 2013).

Figure 1B shows measurements of  $I_{\text{NaL}}$  in ventricular cardiomyocytes during the cardiac AP using a novel self-AP-clamp technique (Banyasz *et al.* 2011; Chen-Izu *et al.* 2012; Horvath *et al.* 2013). This technique uses the myocyte's own characteristic AP as a voltage-clamp waveform measured under physiological conditions, with preserved  $\text{Na}^+$  and  $\text{Ca}^{2+}$  homeostasis. Then one can sequentially block specific currents such as  $I_{\text{NaL}}$  (e.g. with TTX, or more  $I_{\text{NaL}}$ -selective compounds like GS458967; Belardinelli *et al.* 2013). The difference current can be used to infer the actual  $I_{\text{NaL}}$  flowing during the physiological AP. One can then, in the same myocyte, assess  $\text{K}^+$  currents the same way, so that in the case shown in Fig. 2B one can measure the rapid and slow delayed rectifier, and inward rectifying,  $\text{K}^+$  currents ( $I_{\text{Kr}}$ ,  $I_{\text{Ks}}$  and  $I_{\text{K1}}$ ) to assess the balance of key inward and outward currents during the AP plateau. With respect to  $I_{\text{NaL}}$ , two things are apparent and differ from classical square pulse measurements. First, the  $I_{\text{NaL}}$  amplitude appears to be larger than expected, and is comparable in scale to  $\text{K}^+$  currents during the plateau. Second,  $I_{\text{NaL}}$

is relatively clearly separated from the fast peak  $I_{Na}$ , and progressively increases as repolarization proceeds during the plateau, because the driving force ( $V_m - E_{Na}$ ), the difference between the membrane potential and the Na<sup>+</sup> equilibrium potential, is increasing faster than conductance is declining. This differs dramatically from the monotonic  $I_{NaL}$  decline seen in square pulses and makes it more apparent how  $I_{NaL}$  can contribute to early afterdepolarizations (EADs).



**Figure 1. Late Na<sup>+</sup> current in ventricular myocytes**

A,  $I_{NaL}$  recorded in a human ventricular myocyte using traditional square voltage clamp pulse from  $-120$  mV (where Na<sup>+</sup> channel availability is maximized) to  $-30$  mV (where the peak of  $I_{Na}$  occurs; from Maltsev & Undrovinas, 2006, with permission). B,  $I_{NaL}$  recorded under <sup>self</sup>AP-clamp in guinea pig ventricular myocyte (from Horvath *et al.* 2013, with permission). Notice that the  $I_{NaL}$  during AP can be clearly separated from the fast Na<sup>+</sup> current at the onset of AP.  $I_{NaL}$  is sustained during the AP plateau phase, and increases as repolarization proceeds. This is because the driving force ( $E_m - E_{Na}$ ) increases faster than the conductance declines during this phase. Nernst potentials for Na<sup>+</sup> and K<sup>+</sup> are shown ( $E_{Na}$  and  $E_K$ ).  $I_{NaL}$  and K<sup>+</sup> currents ( $I_{Kr}$ ,  $I_{Ks}$  and  $I_{K1}$ ) can be recorded from the same cell under <sup>self</sup>AP-clamp Sequential Dissection.

Another limitation of the square pulse voltage-clamp protocols to measure  $I_{NaL}$  is that there is no unambiguous separation between the peak and the late components in the monotonically decaying current trace (Maltsev & Undrovinas, 2006). A commonly accepted practice is to fit  $I_{NaL}$  after a somewhat arbitrary delay (e.g. 40–50 ms after the onset of depolarization with currents recorded at room temperature). While practical, that approach is likely to underestimate  $I_{NaL}$  and provide limited kinetic information with respect to function during the AP. Another complication in measuring  $I_{NaL}$  relates to a form of Na<sup>+</sup> channel gating called *non-equilibrium gating*. Clancy *et al.* (2003) first discovered an enhancement of  $I_{Na}$  under a repolarizing voltage ramp (non-equilibrium condition), which is not seen under square pulse protocols. This phenomenon can be explained by a fast recovery of the Na<sup>+</sup> channel from the inactivated state and reactivation during the repolarization phase. The non-equilibrium gating may give rise to a substantial portion of  $I_{NaL}$  and, importantly, this portion of the current cannot be activated by using a square pulse voltage-clamp protocol (Clancy *et al.* 2003; Moreno & Clancy, 2012). A recent study also demonstrated how this non-equilibrium gating of Na<sup>+</sup> channels can be responsible for EADs in mouse ventricular myocytes which have a late plateau phase at  $E_m$  more negative than  $-45$  mV (that is driven by large Ca<sup>2+</sup> transients and Na<sup>+</sup>/Ca<sup>2+</sup> exchange current) (Edwards *et al.* 2014). This differs from EAD mechanisms that occur at positive plateau  $E_m$  seen in human, rabbit or guinea-pig ventricle, but might be relevant to some human atrial myocytes that have a similar waveform.

In summary, recent studies suggest that the magnitude of  $I_{NaL}$  is much larger than previously appreciated. Moreover,  $I_{NaL}$  is increased in heart failure and is thus probably a major contributor to the AP prolongation and the increased arrhythmia propensity that accompanies heart failure (Shryock *et al.* 2013). It will be highly informative to use the <sup>self</sup>AP-clamp Sequential Dissection technique to record  $I_{NaL}$  under different pathophysiological conditions, such as experimental models of long QT syndrome and heart failure.

#### Question or controversy: the late Na<sup>+</sup> current

What is the magnitude of  $I_{NaL}$  under physiologically relevant conditions?

How to capture all the possible mechanisms contributing to  $I_{NaL}$  in experimental measurements?

**Na<sup>+</sup> channel regulation by Ca<sup>2+</sup>, calmodulin and calmodulin-dependent protein kinase II.** An important component of Na<sup>+</sup> channel regulation is by the Ca<sup>2+</sup>, calmodulin (CaM) and CaM-dependent protein kinase II (CaMKII) pathway that affects channel function. Ca<sup>2+</sup> is

found to modulate Na<sup>+</sup> channel inactivation (Tan *et al.* 2002; Sarhan *et al.* 2012). CaM is known to bind to the Na<sup>+</sup> channel IQ domain in both Ca<sup>2+</sup>-bound and Ca<sup>2+</sup>-free forms (Bahler & Rhoads, 2002; Shah *et al.* 2006). The mechanisms of Ca<sup>2+</sup> and CaM regulation and their collective effects on Na<sup>+</sup> channel has been a subject of extensive study in the field, which was summarized in a recent review by Van Petegem, Lobo and Ahern (Van Petegem *et al.* 2012). They proposed that Ca<sup>2+</sup> modulation of  $I_{Na}$  facilitation occurs at high pacing frequency when Ca<sup>2+</sup> levels accumulate. Many Na<sup>+</sup> channel disease mutations are located in Ca<sup>2+</sup>-sensing domains, and disruptions of Ca<sup>2+</sup>-dependent regulation contribute to Na<sup>+</sup> channel dysfunction.

Wagner *et al.* (2006) first showed that CaMKII interacts with, and phosphorylates, the cardiac Na<sup>+</sup> channel, and causes major changes in  $I_{Na}$  gating and [Na<sup>+</sup>]<sub>i</sub> in rabbit and mouse ventricular myocytes. They showed that CaMKII caused a negative shift in Na<sup>+</sup> channel availability (steady state inactivation), but no change in activation  $E_m$  dependence or peak amplitude of fully available  $I_{Na}$ . There was also an increase in intermediate inactivation (but no change in rapid inactivation) and slowed recovery from inactivation. These changes are all loss-of-function effects that would reduce  $I_{Na}$  in the heart (analogous to certain genetic short QT or Brugada mutations). However, CaMKII also greatly increased  $I_{NaL}$ , which would be a gain-of-function and mimic LQT3. Interestingly, the array of CaMKII-induced alterations in  $I_{Na}$  gating almost exactly phenocopies the effects of a human point mutation in Na<sub>v</sub>1.5 (1795InsD) that is associated with both LQT and Brugada syndromes, depending on heart rate (Veldkamp *et al.* 2000). Since CaMKII is known to be upregulated and more active in heart failure this could be an acquired form of arrhythmias in heart failure patients (Erickson & Anderson, 2008; Bers & Grandi, 2009; Anderson *et al.* 2011). The elevated CaMKII activity in heart failure and other pathologies can also modulate many ion channels and Ca<sup>2+</sup> transport proteins, including  $I_{Na}$ ,  $I_{Ca}$ ,  $I_{to}$ ,  $I_{K1}$ ,  $I_{K(ATP)}$  and the ryanodine receptor (SR Ca<sup>2+</sup> release channel) and these effects may interact in complex ways (Clancy & Rudy, 2002; Grandi *et al.* 2007; Wagner *et al.* 2009, 2011; Maier, 2011; Ma *et al.* 2012; Horvath *et al.* 2013; D. M. Zhang *et al.* 2014). CaMKII can also modulate the expression of certain K<sup>+</sup> channel subunits (Wagner *et al.* 2009). The composite effect of CaMKII upregulation is pro-arrhythmic (Wagner *et al.* 2006, 2009; Grandi *et al.* 2007; Hund *et al.* 2008).

CaMKII was also reported to interact with  $\beta$ IV-spectrin, and that interaction may position CaMKII to phosphorylate the channel to alter  $I_{NaL}$  gating (Hund *et al.* 2010). Three different sites in the intracellular loop linking domains I and II have been shown to be phosphorylated by CaMKII (S516, S571 and T594) and are implicated in the CaMKII-induced changes in  $I_{Na}$  gating (Hund

*et al.* 2010; Ashpole *et al.* 2012). Indeed, phosphomimetic mutations at these three sites could mimic some of the effects and non-phosphorylatable mutants could block CaMKII effects on Na<sup>+</sup> channel availability, intermediate inactivation and  $I_{NaL}$ . However, the relative roles of these three sites are somewhat controversial, and more than one site may be involved. Clarifying the molecular mechanism linking specific site phosphorylation and functional effects on  $I_{Na}$  gating remains an important area of study.

#### Question or controversy: CaMKII regulation of late Na<sup>+</sup> current

The specific functional roles of the three CaMKII phosphorylation sites (S516, S571 and T594) on Na<sub>v</sub>1.5 are subjects of debate.

What are the detailed mechanisms of CaMKII activation of  $I_{NaL}$ ?

The details of the bi-directional feedback between  $I_{NaL}$  and CaMKII still need to be resolved.

The role of CaMKII in activating  $I_{NaL}$  is compelling, even though the molecular details await further clarification. Recent studies have continued to show that CaMKII inhibition reduces  $I_{NaL}$  measured using the <sup>self</sup>AP-clamp recording (Horvath *et al.* 2013). Maltsev and coauthors have also shown that effects of CaMKII inhibition on  $I_{NaL}$  are stronger in ventricular myocytes isolated from dogs with heart failure vs. normal dogs (Maltsev *et al.* 2008b). The reverse is also true that an increased late  $I_{Na}$  can also activate CaMKII (Yao *et al.* 2011), setting up a deleterious positive feedback cycle between  $I_{Na}$  and CaMKII. That is, greater Na<sup>+</sup> entry via  $I_{NaL}$  increases [Ca<sup>2+</sup>]<sub>i</sub> (via Na<sup>+</sup>/Ca<sup>2+</sup> exchange) and that promotes greater CaMKII activation and further increase in  $I_{NaL}$  (Morotti *et al.* 2014). Indeed, some CaMKII effects have been integrated into detailed computational models to better understand crosstalk and feedback (Veldkamp *et al.* 2000; Erickson & Anderson, 2008; Hund *et al.* 2008; Saucerman & Bers, 2008; Wagner *et al.* 2009, 2011; Moreno *et al.* 2013; Morotti *et al.* 2014). Model predictions may serve as a guide to future experiments in order to gain a more complete understanding of the complex Na<sup>+</sup> and Ca<sup>2+</sup> regulation systems.

Phosphorylation of Na<sub>v</sub>1.5 channels by CaMKII is a potential arrhythmogenic mechanism in heart failure and has emerged as a critical area of investigations in cardiac electrophysiology (Grandi *et al.* 2007; Herren *et al.* 2013). However, direct identification of key phosphorylation sites in native cardiac Na<sup>+</sup> channel remains unclear to date. Understanding the CaMKII phosphorylation of Na<sup>+</sup> channels will be critically important to the ongoing efforts to develop new therapeutic strategies using inhibitors of CaMKII and  $I_{NaL}$ .

### Distinct population of Na<sup>+</sup> channels in cardiac myocytes.

An important aspect of Na<sup>+</sup> channel regulation is the channel spatial distribution. Two separate pools have been identified, one at intercalated discs and the other at the lateral and the T-tubular membrane. Those at the lateral membrane interact with dystrophin and syntrophin proteins, while the membrane-associated guanylate kinase protein SAP97 may organize channels at intercalated discs. The existence of these two pools immediately raises interesting physiological and pathophysiological questions (Shy *et al.* 2013). For example, based on work from Hund and colleagues regarding CaMKII targeting to intercalated discs through its  $\beta$ IV-spectrin interaction, the SAP97 pool of Na<sup>+</sup> channels at the intercalated discs might contribute more to  $I_{NaL}$  than the lateral dystrophin/syntrophin pool. More recent evidence for the multiple Na<sub>v</sub>1.5-pool model has been published by Shy *et al.* (2014), using genetically modified mice where the SAP97 and syntrophin interaction domain was truncated (at the last 3 amino acids of Na<sub>v</sub>1.5). That caused an exclusive down-regulation of Na<sub>v</sub>1.5 at the lateral sarcolemma (Fig. 2) leading to slow impulse propagation and increased anisotropy of conduction (Shy *et al.* 2014).

#### Question or controversy: localization of Na<sup>+</sup> channels in cardiac myocytes

How does Na<sub>v</sub>1.5 localization affect function, regulation and stabilization?

What are the interacting proteins in complex with Na<sub>v</sub>1.5 and how do they modify function?

These recent results are challenging the role of SAP97 in targeting and stabilizing Na<sub>v</sub>1.5 at the intercalated discs, and suggest that this interaction may have other roles that remain to be determined. What happens to these pools in

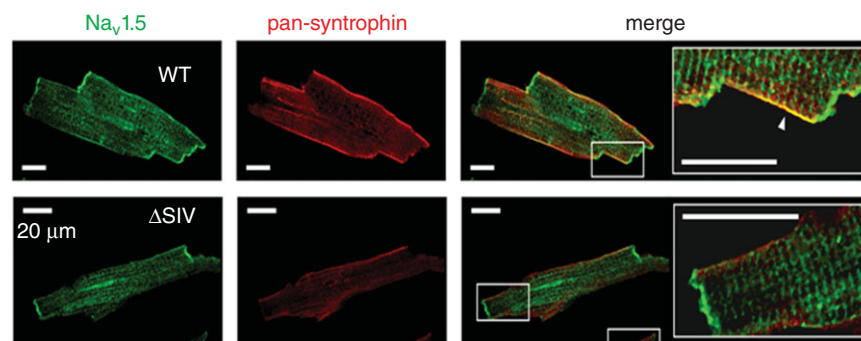
heart failure and the consequent increase in  $I_{NaL}$  remains an important question to be addressed.

### Na<sup>+</sup> channel structure

In the session on 'Na<sup>+</sup> channel structure and function', William Catterall talked about structural studies and Vladimir Yarov-Yarovoy presented modelling studies. Richard Aldrich led the discussion with the panelists Mark Cannell, Walter Chazin, Eric Sobie and Jon Sack.

Understanding the structures adopted by Na<sub>v</sub> channels can profoundly advance therapeutic strategies for treating cardiac disorders if cardiac Na<sub>v</sub> channel subtypes could be selectively modulated. There are nine human Na<sub>v</sub> channel subtypes that are expressed in neuronal, cardiac and muscle cells (Catterall *et al.* 2005). The Na<sub>v</sub>1.5 is the primary Na<sub>v</sub> channel isoform expressed in cardiac muscle (Sheldon *et al.* 1986; Rogart *et al.* 1989; Gellens *et al.* 1992). Additionally, significant levels of expression of neuronal Na<sub>v</sub>1.1, Na<sub>v</sub>1.2, Na<sub>v</sub>1.3, Na<sub>v</sub>1.4 and Na<sub>v</sub>1.6 channels have also been detected in cardiomyocytes (Maier *et al.* 2004; Kaufmann *et al.* 2013; Westenbroek *et al.* 2013). To selectively target and modulate the function of cardiac Na<sub>v</sub> channels, ligands are needed that distinguish between different Na<sub>v</sub> channel subtypes. The key to the rational design of subtype-selective drugs is to advance our understanding of structure and function of cardiac Na<sub>v</sub> channels at atomic resolution.

**Structure of Na<sub>v</sub> channels.** Recently, the first structures of a bacterial Na<sub>v</sub> channel were solved at high resolution (Payandeh *et al.* 2011, 2012; McCusker *et al.* 2012; Zhang *et al.* 2012; Shaya *et al.* 2014). These structures provide useful templates for structural modelling of human Na<sub>v</sub> channels (Fig. 3). Prokaryotic Na<sub>v</sub> channels



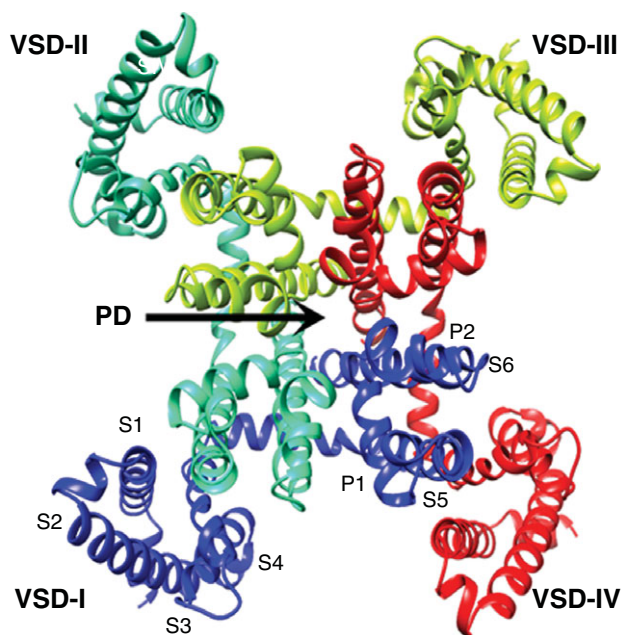
**Figure 2. Na<sub>v</sub>1.5 localization**

Upper panels show confocal images of mouse ventricular myocyte with dual immunofluorescence staining. Na<sub>v</sub>1.5 (green) is expressed at the intercalated discs, T-tubules and lateral membrane. Punctate staining is most-likely at T-tubules. Syntrophin is only expressed at the lateral membrane where it co-localizes with Na<sub>v</sub>1.5 (arrow in merge showing the yellow region of co-localization). Lower panels show myocytes from genetically modified mice (truncation of the last three residues of Na<sub>v</sub>1.5 interacting with syntrophins and SAP97,  $\Delta$ SIV) illustrating the reduction of Na<sub>v</sub>1.5 expression exclusively at the lateral membrane (from Shy *et al.* 2014, with permission).

are formed by four identical subunits that form two- or fourfold symmetric structures (Payandeh *et al.* 2011, 2012; McCusker *et al.* 2012; Zhang *et al.* 2012; Shaya *et al.* 2014). Eukaryotic Na<sub>V</sub> channels are different in that the pore is formed from a single copy of a protein composed of four homologous domains (I–IV). Importantly, each of the domains is similar to a prokaryotic subunit. In all Na<sub>V</sub> channels, each domain contains six transmembrane segments (S1–S6), with segments S1–S4 forming the voltage-sensing domain (VSD) and segments S5 and S6 forming the pore-forming domain (PD) (Fig. 3) (Payandeh *et al.* 2011; Catterall, 2014). The loop between segments S5 and S6 forms the narrow selectivity filter that is stabilized by P1 and P2 helices (Fig. 3). The S4 segment in the VSD has several gating-charge-carrying arginines that play a key role in the mechanism of voltage sensing. By grafting extensive experimental data of decades of functional and biochemical studies on eukaryotic Na<sub>V</sub> channels onto the structure of bacterial Na<sub>V</sub> channels, atomistic details of mammalian Na<sub>V</sub> channel structure–function relationships are beginning to emerge.

**What can bacterial Na<sub>V</sub> channels tell us?** Breakthroughs in membrane protein structure are occurring at a startling pace, yet atomic resolution electron densities of mammalian Na<sub>V</sub> channels are unlikely to emerge in the next few years. Despite the heroic efforts of

many laboratories, it remains a great challenge to prepare large quantities of high quality, functional eukaryotic Na<sub>V</sub> channel proteins. Hence, we are reliant on bacterial Na<sub>V</sub> channels for atomistic structures. While sequence conservation within each mammalian Na<sub>V</sub> domain is remarkably high across Eukarya, each domain contains distinct sequence differences that are crucial for voltage-dependent activation and inactivation (Chanda & Bezanilla, 2002; Chanda *et al.* 2004; Campos *et al.* 2007, 2008; Capes *et al.* 2013; Catterall, 2014). Detailed studies showing different contributions of the four domains of mammalian Na<sub>V</sub> channels make it clear that not all questions about channel gating can be answered from the single domain bacterial Na<sub>V</sub> channels (Chanda & Bezanilla, 2002; Chanda *et al.* 2004; Campos *et al.* 2007, 2008; Capes *et al.* 2013). While the selectivity filter of bacterial Na<sub>V</sub> channels is formed by an ‘EEEE’ motif, the selectivity filter of eukaryotic Na<sub>V</sub> channels is formed by the ‘DEKA’ motif. Clearly, however, the bacterial Na<sub>V</sub> channels share Na<sup>+</sup> selectivity, gating and pharmacological features that are very similar to mammalian Na<sub>V</sub> channels. Most significantly, recent studies from the Catterall lab suggest the possibility that slow inactivation of Na<sup>+</sup> channels, which is most crucial for determining  $I_{NaL}$  during the AP, may result from asymmetric closure of the intracellular pore mouth (Payandeh *et al.* 2012). This has significant implications for the effects of open channel and other blockers with complex use-dependent effects. It remains to be seen whether the mechanisms underlying these properties are related or convergent at the atomic level.



**Figure 3. Structure of a sodium channel**

Voltage-sensing domains (VSD-I, VSD-II, VSD-III, and VSD-IV) and pore-forming domain (PD) are labelled. Transmembrane segments S1–S6, and selectivity filter region pore helices P1 and P2 are labelled for domain I (blue). Each domain is a different colour.

**Antiarrhythmic and local anaesthetic drug binding site is conserved among Na<sub>V</sub> channel subtypes.** Ion conduction through Na<sub>V</sub> channels can be directly altered by the interaction of antiarrhythmic and local anaesthetics such as lidocaine (lignocaine) to a receptor site formed within the PD inner cavity (Ragsdale *et al.* 1994; Yarov-Yarovsky *et al.* 2001, 2002). However, because residues forming the antiarrhythmic and local anaesthetic drug receptor site in the PD are highly conserved among all Na<sub>V</sub> channels, all currently available therapeutic drugs targeting Na<sub>V</sub> channels have only modest subtype selectivity.

**Structure-based drug design: a way forward for Na<sub>V</sub> therapeutics.** The variable functional regions of Na<sub>V</sub> channels are prime targets of natural toxins from venoms of predatory creatures such as scorpions, spiders, snakes and cone snails (Keizer *et al.* 2003; Catterall *et al.* 2007; Zhang *et al.* 2007; Bosmans & Swartz, 2010). These toxins serve as useful molecular tools to study human Na<sub>V</sub> channel structure and for design of novel modulators of Na<sub>V</sub> channel function. Future studies will focus on targeting unique amino acid residues within three distinct

regions in human Na<sub>v</sub> channel structure: the extracellular side of the selectivity filter in the pore-forming domain (Walker *et al.* 2012), the extracellular side of the voltage-sensing domain II that is responsible for channel activation and is a target of a number of peptide toxins (Chanda & Bezanilla, 2002; Campos *et al.* 2007; Catterall *et al.* 2007; Bosmans & Swartz, 2010), and the extracellular side of the voltage-sensing domain IV that is responsible for channel inactivation and is a target of a number of peptide toxins and small ligands (Chanda & Bezanilla, 2002; Catterall *et al.* 2007; Campos *et al.* 2008; Capes *et al.* 2013; McCormack *et al.* 2013). An advantage of targeting the Na<sub>v</sub> channel voltage-sensing domains is that instead of simply impeding the Na<sup>+</sup> conduction through the pore, these allosteric modulators may fine-tune human Na<sub>v</sub> channel activity in a specific manner. High resolution structural templates from the expanding database of bacterial Na<sub>v</sub> channel X-ray structures and voltage-sensing domain X-ray structures of homologous ion channels (Payandeh *et al.* 2011, 2012; McCusker *et al.* 2012; Zhang *et al.* 2012; Shaya *et al.* 2014), in combination with experimental data-driven computational structural modelling (Henrion *et al.* 2012; Jensen *et al.* 2012; Vargas *et al.* 2012; Yarov-Yarovoy *et al.* 2012) will aid in probing human Na<sub>v</sub> channel structure and attempts at rational design of novel high specificity modulators of Na<sub>v</sub> channel function.

#### Question or challenge: Na<sup>+</sup> channel structure

Atomic resolution of the structure of human Na<sup>+</sup> channels will allow for isoform-specific pharmacological targeting.

Major challenges remain to produce large quantities of pure mammalian Na<sub>v</sub> proteins.

How to model equilibrium, transition and unstable states using structural tools?

Retrograde trafficking is an emerging field with many unanswered questions.

**What are the limitations of atomistic structural models of Na<sub>v</sub> channels?** The structural approaches to drug design require the Na<sub>v</sub> channel conformations captured to be similar to those adopted by Na<sub>v</sub> channels in the cell membrane. However, while the structures observed are necessarily at a stable equilibrium, Na<sub>v</sub> channel function is a dynamic process. In addition to conformations occupied at equilibrium, the unstable intermediates and transition states that dictate the kinetics of Na<sub>v</sub> channel opening are of the utmost importance. To understand these structurally is even more of a challenge. X-ray structure-determination methods can capture meta-stable closed, open or inactivated Na<sub>v</sub> channel states, but to atomistically understand kinetics, structural information

on the transiently populated Na<sub>v</sub> channel states is also required. What does a Na<sub>v</sub> channel's structure look like as it vaults over an activation barrier? Experimental techniques are unlikely to directly capture transient Na<sub>v</sub> channel states. However, computational structural modelling provides a means to address these critical issues. For example, understanding Na<sub>v</sub> channel kinetics requires characterizing the range of conformational states populated and knowing what the energy of the transient states are compared to all of the other states. Computational simulation such as molecular dynamics appears to be our best hope to understand these transitions. Empirical validation of simulation-generated hypotheses will be critical to evaluating the effectiveness of this approach. With sufficient structural understanding, careful modelling of functional coupling and robust experimental validation this may be achievable. In that event, computational methods may be capable of designing drugs to stabilize specific Na<sub>v</sub> channel conformations.

In recent years methods for ligand design, exemplified by the Rosetta approach, have proven capable of designing high affinity peptide ligands *de novo*, for a variety of protein targets. These computational chemistry approaches will doubtless advance in coming years and should provide a way forward for structure-based drug design, assuming atomic coordinates of Na<sub>v</sub> channel conformations to target can be modelled. Thus, the burning question is, do we have structural models that are sufficient in their atomistic detail to understand the channel gating mechanisms? An exciting new direct electron detection technology for electron microscopy (Cao *et al.* 2013; Liao *et al.* 2013) appears to be extremely promising for directly determining high-resolution structures of mammalian Na<sub>v</sub> channels and should this prove successful, these will probably provide access to multiple states. However, until eukaryotic structures are captured, understanding how bacterial Na<sub>v</sub> channels work at the atomic level will serve to provide the primary basis for studies of structure and function of mammalian Na<sub>v</sub> channels.

#### Trafficking, sequestration and complexing

*In the session on 'Trafficking, sequestration and complexing', Peter Mohler presented work on Na<sup>+</sup> channel sequestration and Isabelle Deschenes presented work on Na<sup>+</sup> channel trafficking. Robin Shaw led the discussion with Nipavan Chiamvimonvat.*

A well-documented but not widely appreciated aspect of ion channel biology, including cardiac ion channel biology, is that individual ion channels have half-lives in the order of hours. Connexin43 (Cx43) gap junction protein has a half-life of about 1–3 h (Beardslee *et al.* 1998; Smyth



*et al.* 2014). Potassium, calcium and sodium–calcium exchanger current channels have half-lives that are reported to be in the range of 2–8 h (Chien *et al.* 1995; Egger *et al.* 2005; Colley *et al.* 2007; Di Biase *et al.* 2011). It is not clear whether channel half-lives on the plasma membrane are longer or shorter than the overall protein half-life, or whether post-translational modifications (e.g. phosphorylation) can influence this. Indeed, it has been reported that different pools of channels exist within the cardiomyocyte (Petitprez *et al.* 2011). In cardiac myocytes, channels such as the Na<sup>+</sup> channel may have a slightly extended half-life of about 35 h (Maltsev *et al.* 2008aa); however, the half-lives of channels are likely to be different based on cell type and specific membrane partners. The implications for a turnover on the scale of several to tens of hours is that, in the course of any given day, the bulk of ion channels in an individual cardiomyocyte are regenerated and newly positioned. Thus the formation and *trafficking* of channels is considered as a dynamic ongoing process, and expected to have a critical impact on overall channel function.

Ion channel trafficking can be categorized into the three groups: *forward trafficking*, which is the transport of *de novo* post-translation channels and recycled channels from the cytoplasm to the membrane; *membrane behaviour*, which is the behaviour of channels once trafficked to membrane and their lateral movement to other local and distant regions of membrane; and *retrograde trafficking* or internalization and transport to degradation or recycling pathways.

**Forward trafficking.** Regarding forward trafficking, many components of the traditional cytoskeleton are responsible for channel delivery. Research from Shaw and colleagues has explored targeted delivery for cardiac ion channels, which is based on the concept that ion channels exit the endoplasmic reticulum (ER)/Golgi apparatus and are delivered directly to specific subdomains of the plasma membrane. Channels are transported along microtubule highways and specificity of targeted delivery occurs as a result of a combination of microtubule plus-end tracking proteins, the channel itself, and a membrane anchor (Shaw *et al.* 2007; Hong *et al.* 2010; Smyth *et al.* 2010). Under the conditions of oxidative stress that occur in ischaemic heart disease and heart failure, microtubule plus-end tracking proteins are displaced and forward delivery of channels impaired (Smyth *et al.* 2010). Absence of anchor proteins can also affect forward trafficking. Loss of the membrane anchor BIN1 diminishes forward trafficking of the L-type calcium channel in heart failure (Hong *et al.* 2012). The actin cytoskeleton is also involved in channel forward trafficking (Smyth *et al.* 2012; S. S. Zhang *et al.* 2014). Indeed, the roles of cytoskeletal proteins in channel trafficking may represent a unified theme for other types of

ion channels. For example, both  $\alpha$ -actinin2 and filamin A are critical for K<sup>+</sup> channel trafficking as reported by the Chiamvimonvat lab (Lu *et al.* 2009; Rafizadeh *et al.* 2014).

#### Question or challenge: Na<sup>+</sup> channel trafficking

What are the mechanisms of forward trafficking? How do ion channels regulate trafficking?

Major challenges remain due to the lack of high quality antibodies for cardiac ion channels, transporters and associated membrane proteins.

The mechanisms of ion channel forward trafficking are only beginning to be determined and include novel mechanisms such as the role of ankyrin adaptor proteins on channel localization, with ankyrin-G binding to and regulating Na<sub>v</sub>1.5 localization (Lowe *et al.* 2008; Dun *et al.* 2013) and ankyrin-B regulating the membrane targeting and subsequent regulation of the Na<sup>+</sup>/Ca<sup>2+</sup> exchanger, Na<sup>+</sup>/K<sup>+</sup>-ATPase, Ca<sub>v</sub>1.3 and *myo*-inositol 1,4,5-trisphosphate (IP<sub>3</sub>) receptor (Cunha & Mohler, 2011). Notably, defects in ankyrin-based sequestration pathways have been tightly linked with arrhythmia phenotypes in animal models as well as humans. For example, mutations in Na<sub>v</sub>1.5 that lack the ability to bind ankyrin-G are now known to cause aberrant Na<sub>v</sub>1.5 trafficking and result in human Brugada syndrome (Mohler *et al.* 2004). Furthermore, ankyrin-B dysfunction is linked with sinus node dysfunction, atrial fibrillation, conduction defects, and potentially fatal ventricular arrhythmia (Mohler *et al.* 2003; Le Scouarnec *et al.* 2008; Cunha *et al.* 2011). Fibroblast homologous growth factors have also been shown to be potent regulators of Na<sub>v</sub>1.5 and Ca<sub>v</sub>1.2 localization to the sarcolemma (Wang *et al.* 2011; Hennessey *et al.* 2013).

Ion channels can also autoregulate forward movement. For example, coexpression of mutant and wild-type (WT) Na<sup>+</sup> channel subunits has been shown to reduce Na<sup>+</sup> current. Surprisingly, the reduction was not because of altered gating but reduced membrane expression. It appears that the trafficking signal involves a cluster of  $\alpha$  subunits and that the signal is aberrant in mutant/WT clusters. Furthermore, it was recently found that the Cx43 mRNA transcript can undergo alternative translation, utilizing internal in-frame AUG start sites with the production of as many as six significantly smaller C-terminal truncation isoforms (Smyth & Shaw, 2013). At least one of the smaller isoforms (GJA –20 kDa, which is a nomenclature derived from gene name and the size of the alternative translated isoform) assists with full-length Cx43 exit from the ER/Golgi. It is likely that other cardiac ion channels undergo alternative translation as well, explaining both the origin of smaller fragments of unclear origin as well as potentially non-ion-flux-related cellular functions of channel proteins.

As limitations of the analysis of forward trafficking, technical challenges in protein identification and cellular imaging were discussed. A major advance is the use of fluorescent proteins that fuse with the channel proteins of interest to follow the trafficking of channel proteins and relationship to cytoskeleton components and membrane anchors in real-time. More recently, polydimethylsiloxane (PDMS)-based patterning has been employed to force cell lines and neonatal cardiomyocytes to grow into predefined cell-pair regions allowing for reproducible cultured cell geometry to better control and quantify the cytoskeleton dynamics and behaviour of channel movement to cell–cell borders. While exciting new imaging techniques are being developed, future work must address fundamental issues with the lack of high quality antibodies for cardiac ion channels, transporters and associated membrane proteins.

**Membrane behaviour.** Early understanding of the plasma membrane lipid bilayer was that it is a relatively non-constricted surface, and channels and other membrane proteins could diffuse freely in the membrane as well as anchor to scaffolding proteins. This fluid mosaic model is increasingly appreciated as being more mosaic than fluid (Nicolson, 2014). Many transmembrane proteins such as vesicular stomatitis virus glycoproteins freely diffuse, but some ion channels may not enjoy much mobility. For Cx43 channels as well as other cardiac ion channels, the recent evidence has focused on local rearrangements in their respective membrane sub-domains. The cardiac intercalated disc is now viewed as consisting of at least two pools of channels, those within a gap junction plaque, and those in the immediate vicinity in a region known as the perinexus (Rhett & Gourdie, 2012). Analyses of models relating to arrhythmogenic right ventricular cardiomyopathy are revealing channel–channel interactions once they are in the plasma membrane. The Isom group has explored the role of the Na<sup>+</sup> channel  $\beta$  subunit which can regulate cell–cell adhesion (Patino & Isom, 2010). The Delmar group has reported evidence that Cx43 channels at the intercalated disc help with Na<sub>v</sub>1.5 channel localization to this region (Jansen *et al.* 2012).

**Retrograde trafficking.** Retrograde trafficking is also a highly regulated yet poorly understood aspect of cardiac ion channel biology. The actin cytoskeleton is the most prominent member of the cytoskeleton implicated, and different myosin motors may also be involved in forward *versus* retrograde actin trafficking (Schumacher-Bass *et al.* 2014).

Post-translation modification, specifically alteration of phosphorylation status, is associated with an increase in channel internalization. Dephosphorylation of the casein kinase-related serines of the Cx43 C-terminus, as occurs

during stress, reduces the channel density of Cx43 and increases the likelihood of ventricular arrhythmogenesis (Remo & Fishman, 2010). The dephosphorylation of the casein kinase-related serines probably accounts for the dephosphorylation-related band shifts noted for Cx43 in ischaemia and ischaemia–reperfusion injury (Smyth *et al.* 2014). Like all cardiac ion channels, the Cx43 C-terminus has multiple regions subject to altered phosphorylation. It was recently found that the ubiquitous scaffolding protein 14-3-3 is necessary for initiating a well-sequenced cascade of phosphorylation and dephosphorylation, leading to channel ubiquitination and internalization (Smyth *et al.* 2014). Multiple post-translation modification steps of other ion channels are also likely to occur independently of each other, but in a specifically sequenced cascade, regulating the channel survival time once at the plasma membrane.

The emerging picture is one in which Na<sup>+</sup> channels are specifically targeted for forward trafficking to the intercalated disc or the lateral membranes. Channels in different environments have different molecular partners that differentially alter channel characteristics.  $I_{NaL}$ , which plays an important role in arrhythmogenesis, might arise not from a different channel isoform but from increased expression in a different location, namely the intercalated disc.

The interaction of Na<sup>+</sup> channel  $\alpha$  subunits is another emerging area of research. Coexpression of mutant and WT  $\alpha$  subunits reduces Na<sup>+</sup> current not by altered gating as one might expect but by reduced membrane expression. Whether this is due to reduced forward trafficking or enhanced sequestration is unclear. Thus a Na<sup>+</sup> channel should not be viewed as a lone voice but rather as part of a chorus that moves (or not) as a unit. The dynamism of channel turnover – potentially as much as 2 or 3 times per day – could account for changes in channel expression in disease. This opens the exciting possibility for diurnal changes in channel expression in quantity or location. Such changes would result in altered Na<sup>+</sup> current characteristics that might contribute to the diurnal fluctuations in arrhythmia frequency.

## References

- Anderson ME, Brown JH & Bers DM (2011). CaMKII in myocardial hypertrophy and heart failure. *J Mol Cell Cardiol* **51**, 468–473.
- Antzelevitch C, Nesterenko V, Shryock J, Rajamani S, Song Y & Belardinelli L (2014). The role of late  $I_{Na}$  in development of cardiac arrhythmias. *Handb Exp Pharmacol* **221**, 137–168.
- Ashpole NM, Herren AW, Ginsburg KS, Brogan JD, Johnson DE, Cummins TR, Bers DM & Hudmon A (2012). Ca<sup>2+</sup>/calmodulin-dependent protein kinase II (CaMKII) regulates cardiac sodium channel Na<sub>v</sub>1.5 gating by multiple phosphorylation sites. *J Biol Chem* **287**, 19856–19869.

- Bahler M & Rhoads A (2002). Calmodulin signaling via the IQ motif. *FEBS Lett* **513**, 107–113.
- Banyasz T, Horvath B, Jian Z, Izu LT & Chen-Izu Y (2011). Sequential dissection of multiple ionic currents in single cardiac myocytes under action potential-clamp. *J Mol Cell Cardiol* **50**, 578–581.
- Beardslee MA, Laing JG, Beyer EC & Saffitz JE (1998). Rapid turnover of connexin43 in the adult rat heart. *Circ Res* **83**, 629–635.
- Belardinelli L, Liu G, Smith-Maxwell C, Wang WQ, El-Bizri N, Hirakawa R, Karpinski S, Li CH, Hu L, Li XJ, Crumb W, Wu L, Koltun D, Zablocki J, Yao L, Dhalla AK, Rajamani S & Shryock JC (2013). A novel, potent, and selective inhibitor of cardiac late sodium current suppresses experimental arrhythmias. *J Pharmacol Exp Ther* **344**, 23–32.
- Bennett PB, Yazawa K, Makita N & George AL (1995). Molecular mechanism for an inherited cardiac arrhythmia. *Nature* **376**, 683–685.
- Bers DM & Grandi E (2009). Calcium/calmodulin-dependent kinase II regulation of cardiac ion channels. *J Cardiovasc Pharmacol* **54**, 180–187.
- Bosmans F & Swartz KJ (2010). Targeting voltage sensors in sodium channels with spider toxins. *Trends Pharmacol Sci* **31**, 175–182.
- Campos FV, Chanda B, Beirao PS & Bezanilla F (2007).  $\beta$ -Scorpion toxin modifies gating transitions in all four voltage sensors of the sodium channel. *J Gen Physiol* **130**, 257–268.
- Campos FV, Chanda B, Beirao PS & Bezanilla F (2008).  $\alpha$ -Scorpion toxin impairs a conformational change that leads to fast inactivation of muscle sodium channels. *J Gen Physiol* **132**, 251–263.
- Cao E, Liao M, Cheng Y & Julius D (2013). TRPV1 structures in distinct conformations reveal activation mechanisms. *Nature* **504**, 113–118.
- Capes DL, Goldschen-Ohm MP, Arcisio-Miranda M, Bezanilla F & Chanda B (2013). Domain IV voltage-sensor movement is both sufficient and rate limiting for fast inactivation in sodium channels. *J Gen Physiol* **142**, 101–112.
- Catterall WA (2014). Structure and function of voltage-gated sodium channels at atomic resolution. *Exp Physiol* **99**, 35–51.
- Catterall WA, Cestele S, Yarov-Yarovoy V, Yu FH, Konoki K & Scheuer T (2007). Voltage-gated ion channels and gating modifier toxins. *Toxicon* **49**, 124–141.
- Catterall WA, Goldin AL & Waxman SG (2005). International Union of Pharmacology. XLVII. Nomenclature and structure-function relationships of voltage-gated sodium channels. *Pharmacol Rev* **57**, 397–409.
- Chanda B, Asamoah OK & Bezanilla F (2004). Coupling interactions between voltage sensors of the sodium channel as revealed by site-specific measurements. *J Gen Physiol* **123**, 217–230.
- Chanda B & Bezanilla F (2002). Tracking voltage-dependent conformational changes in skeletal muscle sodium channel during activation. *J Gen Physiol* **120**, 629–645.
- Chen-Izu Y, Izu L, Nanasi P & Banyasz T (2012). From action potential-clamp to ‘onion-peeling’ technique – recording of ionic currents under physiological conditions. In *Patch Clamp Technique*, ed. Kanez FS. InTech, Rijeka (open access book).
- Chien AJ, Zhao X, Shirokov RE, Puri TS, Chang CF, Sun D, Rios E & Hosey MM (1995). Roles of a membrane-localized  $\beta$ subunit in the formation and targeting of functional L-type  $\text{Ca}^{2+}$  channels. *J Biol Chem* **270**, 30036–30044.
- Clancy CE & Rudy Y (2002).  $\text{Na}^{+}$  channel mutation that causes both Brugada and long-QT syndrome phenotypes: a simulation study of mechanism. *Circulation* **105**, 1208–1213.
- Clancy CE, Tateyama M, Liu H, Wehrens XH & Kass RS (2003). Non-equilibrium gating in cardiac  $\text{Na}^{+}$  channels: an original mechanism of arrhythmia. *Circulation* **107**, 2233–2237.
- Colley BS, Biju KC, Visegrady A, Campbell S & Fadool DA (2007). Neurotrophin B receptor kinase increases *Kv* subfamily member 1.3 (*Kv1.3*) ion channel half-life and surface expression. *Neuroscience* **144**, 531–546.
- Cunha SR, Hund TJ, Hashemi S, Voigt N, Li N, Wright P, Koval O, Li J, Gudmundsson H, Gumina RJ, Karck M, Schott J-J, Probst V, Le Marec H, Anderson ME, Dobrev D, Wehrens XHT & Mohler PJ (2011). Defects in ankyrin-based membrane protein targeting pathways underlie atrial fibrillation. *Circulation* **124**, 1212–1222.
- Cunha SR & Mohler PJ (2011). Ankyrin-based cellular pathways for cardiac ion channel and transporter targeting and regulation. *Semin Cell Dev Biol* **22**, 166–170.
- Di Biase V, Tuluc P, Campiglio M, Obermair GJ, Heine M & Flucher BE (2011). Surface traffic of dendritic  $\text{Ca}_v1.2$  calcium channels in hippocampal neurons. *J Neurosci* **31**, 13682–13694.
- Dun W, Lowe JS, Wright P, Hund TJ, Mohler PJ & Boyden PA (2013). Ankyrin-G participates in  $I_{\text{Na}}$  remodeling in myocytes from the border zones of infarcted canine heart. *PLoS One* **8**, e78087.
- Edwards AG, Grandi E, Hake JE, Patel S, Li P, Miyamoto S, Omens JH, Heller Brown J, Bers DM & McCulloch AD (2014). Non-equilibrium reactivation of  $\text{Na}^{+}$  current drives early afterdepolarizations in mouse ventricle. *Circ Arrhythm Electrophysiol* (in press; DOI: 10.1161/CIRCEP.113.001666).
- Egger M, Porzig H, Niggli E & Schwaller B (2005). Rapid turnover of the ‘functional’  $\text{Na}^{+}$ - $\text{Ca}^{2+}$  exchanger in cardiac myocytes revealed by an antisense oligodeoxynucleotide approach. *Cell Calcium* **37**, 233–243.
- Erickson JR & Anderson ME (2008). CaMKII and its role in cardiac arrhythmia. *J Cardiovasc Electrophysiol* **19**, 1332–1336.
- Gellens ME, George AL Jr, Chen LQ, Chahine M, Horn R, Barchi RL & Kallen RG (1992). Primary structure and functional expression of the human cardiac tetrodotoxin-insensitive voltage-dependent sodium channel. *Proc Natl Acad Sci U S A* **89**, 554–558.
- Grandi E, Puglisi JL, Wagner S, Maier LS, Severi S & Bers DM (2007). Simulation of Ca-calmodulin-dependent protein kinase II on rabbit ventricular myocyte ion currents and action potentials. *Biophys J* **93**, 3835–3847.
- Hennessey JA, Wei EQ & Pitt GS (2013). Fibroblast growth factor homologous factors modulate cardiac calcium channels. *Circ Res* **113**, 381–388.
- Henrion U, Renhorn J, Borjesson SI, Nelson EM, Schwaiger CS, Bjelkmar P, Wallner B, Lindahl E & Elinder F (2012). Tracking a complete voltage-sensor cycle with metal-ion bridges. *Proc Natl Acad Sci U S A* **109**, 8552–8557.

- Herren AW, Bers DM & Grandi E (2013). Post-translational modifications of the cardiac Na channel: contribution of CaMKII-dependent phosphorylation to acquired arrhythmias. *Am J Physiol Heart Circ Physiol* **305**, H431–H445.
- Hong TT, Smyth JW, Chu KY, Vogan JM, Fong TS, Jensen BC, Fang K, Halushka MK, Russell SD, Colecraft H, Hoopes CW, Ocorr K, Chi NC & Shaw RM (2012). BIN1 is reduced and Cav1.2 trafficking is impaired in human failing cardiomyocytes. *Heart Rhythm* **9**, 812–820.
- Hong TT, Smyth JW, Gao D, Chu KY, Vogan JM, Fong TS, Jensen BC, Colecraft HM & Shaw RM (2010). BIN1 localizes the L-type calcium channel to cardiac T-tubules. *PLoS Biol* **8**, e1000312.
- Horvath B, Banyasz T, Jian Z, Hegyi B, Kistamas K, Nanasi PP, Izu LT & Chen-Izu Y (2013). Dynamics of the late Na<sup>+</sup> current during cardiac action potential and its contribution to afterdepolarizations. *J Mol Cell Cardiol* **64**, 59–68.
- Hund TJ, Decker KF, Kanter E, Mohler PJ, Boyden PA, Schuessler RB, Yamada KA & Rudy Y (2008). Role of activated CaMKII in abnormal calcium homeostasis and I<sub>Na</sub> remodeling after myocardial infarction: Insights from mathematical modeling. *J Mol Cell Cardiol* **45**, 420–428.
- Hund TJ, Koval OM, Li J, Wright PJ, Qian L, Snyder JS, Gudmundsson H, Kline CF, Davidson NP, Cardona N, Rasband MN, Anderson ME & Mohler PJ (2010). A  $\beta$ (IV)-spectrin/CaMKII signaling complex is essential for membrane excitability in mice. *J Clin Invest* **120**, 3508–3519.
- Jansen JA, Noorman M, Musa H, Stein M, de Jong S, van der Nagel R, Hund TJ, Mohler PJ, Vos MA, van Veen TA, de Bakker JM, Delmar M & van Rijen HV (2012). Reduced heterogeneous expression of Cx43 results in decreased Nav1.5 expression and reduced sodium current that accounts for arrhythmia vulnerability in conditional Cx43 knockout mice. *Heart Rhythm* **9**, 600–607.
- Jensen MO, Jogini V, Borhani DW, Leffler AE, Dror RO & Shaw DE (2012). Mechanism of voltage gating in potassium channels. *Science* **336**, 229–233.
- Kaufmann SG, Westenbroek RE, Maass AH, Lange V, Renner A, Wischmeyer E, Bonz A, Muck J, Ertl G, Catterall WA, Scheuer T & Maier SK (2013). Distribution and function of sodium channel subtypes in human atrial myocardium. *J Mol Cell Cardiol* **61**, 133–141.
- Keizer DW, West PJ, Lee EF, Yoshikami D, Olivera BM, Bulaj G & Norton RS (2003). Structural basis for tetrodotoxin-resistant sodium channel binding by  $\mu$ -conotoxin SmIIIA. *J Biol Chem* **278**, 46805–46813.
- Le Scouarnec S, Bhasin N, Vieyres C, Hund TJ, Cunha SR, Koval O, Marionneau C, Chen B, Wu Y, Demolombe S, Song L-S, Le Marec H, Probst V, Schott J-J, Anderson ME & Mohler PJ (2008). Dysfunction in ankyrin-B-dependent ion channel and transporter targeting causes human sinus node disease. *Proc Natl Acad Sci U S A* **105**, 15617–15622.
- Liao M, Cao E, Julius D & Cheng Y (2013). Structure of the TRPV1 ion channel determined by electron cryo-microscopy. *Nature* **504**, 107–112.
- Lowe JS, Palygin O, Bhasin N, Hund TJ, Boyden PA, Shibata E, Anderson ME & Mohler PJ (2008). Voltage-gated Na<sub>v</sub> channel targeting in the heart requires an ankyrin-G dependent cellular pathway. *J Cell Biol* **180**, 173–186.
- Lu L, Timofeyev V, Li N, Rafizadeh S, Singapuri A, Harris TR & Chiamvimonvat N (2009).  $\alpha$ -Actinin2 cytoskeletal protein is required for the functional membrane localization of a Ca<sup>2+</sup>-activated K<sup>+</sup> channel (SK2 channel). *Proc Natl Acad Sci U S A* **106**, 18402–18407.
- Ma J, Luo A, Wu L, Wan W, Zhang P, Ren Z, Zhang S, Qian C, Shryock JC & Belardinelli L (2012). Calmodulin kinase II and protein kinase C mediate the effect of increased intracellular calcium to augment late sodium current in rabbit ventricular myocytes. *Am J Physiol Cell Physiol* **302**, C1141–C1151.
- McCormack K, Santos S, Chapman ML, Krafte DS, Marron BE, West CW, Krambis MJ, Antonio BM, Zellmer SG, Printzenhoff D, Padilla KM, Lin Z, Wagoner PK, Swain NA, Stuppel PA, de Groot M, Butt RP & Castle NA (2013). Voltage sensor interaction site for selective small molecule inhibitors of voltage-gated sodium channels. *Proc Natl Acad Sci U S A* **110**, E2724–E2732.
- McCusker EC, Bagneris C, Naylor CE, Cole AR, D'Avanzo N, Nichols CG & Wallace BA (2012). Structure of a bacterial voltage-gated sodium channel pore reveals mechanisms of opening and closing. *Nat Commun* **3**, 1102.
- Maier LS (2011). CaMKII regulation of voltage-gated sodium channels and cell excitability. *Heart Rhythm* **8**, 474–477.
- Maier SK, Westenbroek RE, McCormick KA, Curtis R, Scheuer T & Catterall WA (2004). Distinct subcellular localization of different sodium channel  $\alpha$  and  $\beta$  subunits in single ventricular myocytes from mouse heart. *Circulation* **109**, 1421–1427.
- Maltsev VA, Kyle JW, Mishra S & Undrovinas A (2008a). Molecular identity of the late sodium current in adult dog cardiomyocytes identified by Na<sub>v</sub>1.5 antisense inhibition. *Am J Physiol Heart Circ Physiol* **295**, H667–H676.
- Maltsev VA, Reznikov V, Undrovinas NA, Sabbah HN & Undrovinas A (2008b). Modulation of late sodium current by Ca<sup>2+</sup>, calmodulin, and CaMKII in normal and failing dog cardiomyocytes: similarities and differences. *Am J Physiol Heart Circ Physiol* **294**, H1597–H1608.
- Maltsev VA, Sabbah HN, Higgins RS, Silverman N, Lesch M & Undrovinas AI (1998). Novel, ultraslow inactivating sodium current in human ventricular cardiomyocytes. *Circulation* **98**, 2545–2552.
- Maltsev VA, Silverman N, Sabbah HN & Undrovinas AI (2007). Chronic heart failure slows late sodium current in human and canine ventricular myocytes: Implications for repolarization variability. *Eur J Heart Fail* **9**, 219–227.
- Maltsev VA & Undrovinas A (2008). Late sodium current in failing heart: friend or foe? *Prog Biophys Mol Biol* **96**, 421–451.
- Maltsev VA & Undrovinas AI (2006). A multi-modal composition of the late Na<sup>+</sup> current in human ventricular cardiomyocytes. *Cardiovasc Res* **69**, 116–127.
- Mishra S, Undrovinas NA, Maltsev VA, Reznikov V, Sabbah HN & Undrovinas A (2011). Post-transcriptional silencing of SCN1B and SCN2B genes modulates late sodium current in cardiac myocytes from normal dogs and dogs with chronic heart failure. *Am J Physiol Heart Circ Physiol* **301**, H1596–H1605.

- Mohler PJ, Rivolta I, Napolitano C, LeMaillet G, Lambert S, Priori SG & Bennett V (2004). Na<sub>v</sub>1.5 E1053K mutation causing Brugada syndrome blocks binding to ankyrin-G and expression of Na<sub>v</sub>1.5 on the surface of cardiomyocytes. *Proc Natl Acad Sci U S A* **101**, 17533–17538.
- Mohler PJ, Schott J-J, Gramolini AO, Dilly KW, Guatimosim S, duBell WH, Song L-S, Haurogne K, Kyndt F, Ali ME, Rogers TB, Lederer WJ, Escande D, Marec HL & Bennett V (2003). Ankyrin-B mutation causes type 4 long-QT cardiac arrhythmia and sudden cardiac death. *Nature* **421**, 634–639.
- Moreno JD & Clancy CE (2012). Pathophysiology of the cardiac late Na current and its potential as a drug target. *J Mol Cell Cardiol* **52**, 608–619.
- Moreno JD, Yang PC, Bankston JR, Grandi E, Bers DM, Kass RS & Clancy CE (2013). Ranolazine for congenital and acquired late I<sub>Na</sub>-linked arrhythmias: In silico pharmacological screening. *Circ Res* **113**, e50–61.
- Morotti S, Edwards AG, McCulloch AD, Bers DM & Grandi E (2014). A novel computational model of mouse myocyte electrophysiology to assess the synergy between Na<sup>+</sup> loading and CaMKII. *J Physiol* **592**, 1181–1197.
- Nerbonne JM & Kass RS (2005). Molecular physiology of cardiac repolarization. *Physiol Rev* **85**, 1205–1253.
- Nicolson GL (2014). The fluid-mosaic model of membrane structure: Still relevant to understanding the structure, function and dynamics of biological membranes after more than 40 years. *Biochim Biophys Acta* **1838**, 1451–1466.
- Patino GA & Isom LL (2010). Electrophysiology and beyond: multiple roles of Na<sup>+</sup> channel βsubunits in development and disease. *Neurosci Lett* **486**, 53–59.
- Payandeh J, Gamal El-Din TM, Scheuer T, Zheng N & Catterall WA (2012). Crystal structure of a voltage-gated sodium channel in two potentially inactivated states. *Nature* **486**, 135–139.
- Payandeh J, Scheuer T, Zheng N & Catterall WA (2011). The crystal structure of a voltage-gated sodium channel. *Nature* **475**, 353–358.
- Petitprez S, Zmoos AF, Ogrodnik J, Balse E, Raad N, El-Haou S, Albesa M, Bittihn P, Luther S, Lehnart SE, Hatem SN, Coulombe A & Abriel H (2011). SAP97 and dystrophin macromolecular complexes determine two pools of cardiac sodium channels Na<sub>v</sub>1.5 in cardiomyocytes. *Circ Res* **108**, 294–304.
- Rafizadeh S, Zhang Z, Woltz RL, Kim HJ, Myers RE, Lu L, Tuteja D, Singapuri A, Bigdeli AA, Harchache SB, Knowlton AA, Yarov-Yarovoy V, Yamoah EN & Chiamvimonvat N (2014). Functional interaction with filamin A and intracellular Ca<sup>2+</sup> enhance the surface membrane expression of a small-conductance Ca<sup>2+</sup>-activated K<sup>+</sup> (SK2) channel. *Proc Natl Acad Sci U S A* **111**, 9989–9994.
- Ragsdale DS, McPhee JC, Scheuer T & Catterall WA (1994). Molecular determinants of state-dependent block of Na<sup>+</sup> channels by local anesthetics. *Science* **265**, 1724–1728.
- Remo BF & Fishman GI (2010). A colorful explanation for atrial arrhythmias. *Pigment Cell Melanoma Res* **23**, 3–4.
- Rhett JM & Gourdie RG (2012). The perinexus: a new feature of Cx43 gap junction organization. *Heart Rhythm* **9**, 619–623.
- Rivolta I, Abriel H, Tateyama M, Liu H, Memmi M, Vardas P, Napolitano C, Priori SG & Kass RS (2001). Inherited Brugada and long QT-3 syndrome mutations of a single residue of the cardiac sodium channel confer distinct channel and clinical phenotypes. *J Biol Chem* **276**, 30623–30630.
- Rogart RB, Cribbs LL, Muglia LK, Kephart DD & Kaiser MW (1989). Molecular cloning of a putative tetrodotoxin-resistant rat heart Na<sup>+</sup> channel isoform. *Proc Natl Acad Sci U S A* **86**, 8170–8174.
- Sarhan MF, Tung CC, Van Petegem F & Ahern CA (2012). Crystallographic basis for calcium regulation of sodium channels. *Proc Natl Acad Sci U S A* **109**, 3558–3563.
- Saucerman JJ & Bers DM (2008). Calmodulin mediates differential sensitivity of CaMKII and calcineurin to local Ca<sup>2+</sup> in cardiac myocytes. *Biophys J* **95**, 4597–4612.
- Schumacher-Bass SM, Vesely ED, Zhang L, Ryland KE, McEwen DP, Chan PJ, Frasier CR, McIntyre JC, Shaw RM & Martens JR (2014). A role for myosin V motor proteins in the selective delivery of Kv channel isoforms to the membrane surface of cardiac myocytes. *Circ Res* **114**, 982–992.
- Shah VN, Wingo TL, Weiss KL, Williams CK, Balsler JR & Chazin WJ (2006). Calcium-dependent regulation of the voltage-gated sodium channel hH1: intrinsic and extrinsic sensors use a common molecular switch. *Proc Natl Acad Sci U S A* **103**, 3592–3597.
- Shaw RM, Fay AJ, Puthenveedu MA, von Zastrow M, Jan YN & Jan LY (2007). Microtubule plus-end-tracking proteins target gap junctions directly from the cell interior to adherens junctions. *Cell* **128**, 547–560.
- Shaya D, Findeisen F, Abderemane-Ali F, Arrigoni C, Wong S, Nurva SR, Loussouarn G & Minor DL Jr (2014). Structure of a prokaryotic sodium channel pore reveals essential gating elements and an outer ion binding site common to eukaryotic channels. *J Mol Biol* **426**, 467–483.
- Sheldon RS, Cannon NJ & Duff HJ (1986). Binding of [<sup>3</sup>H]batrachotoxinin A benzoate to specific sites on rat cardiac sodium channels. *Mol Pharmacol* **30**, 617–623.
- Shryock JC, Song Y, Rajamani S, Antzelevitch C & Belardinelli L (2013). The arrhythmogenic consequences of increasing late I<sub>Na</sub> in the cardiomyocyte. *Cardiovasc Res* **99**, 600–611.
- Shy D, Gillet L & Abriel H (2013). Cardiac sodium channel Na<sub>v</sub>1.5 distribution in myocytes via interacting proteins: The multiple pool model. *Biochim Biophys Acta* **1833**, 886–894.
- Shy D, Gillet L, Ogrodnik J, Albesa M, Verkerk A, Wolswinkel R, Rougier J-S, Barc J, Essers M, Syam N, Marsman R, van Mil A, Rotman S, Redon R, Bezzina C, Remme C & Abriel H (2014). PDZ-domain-binding motif regulates cardiomyocyte compartment-specific Na<sub>v</sub>1.5 channel expression and function. *Circulation* **130**, 147–160.
- Smyth JW, Hong TT, Gao D, Vogan JM, Jensen BC, Fong TS, Simpson PC, Stainier DY, Chi NC & Shaw RM (2010). Limited forward trafficking of connexin 43 reduces cell-cell coupling in stressed human and mouse myocardium. *J Clin Invest* **120**, 266–279.
- Smyth JW & Shaw RM (2013). Autoregulation of connexin43 gap junction formation by internally translated isoforms. *Cell Rep* **5**, 611–618.

- Smyth JW, Vogan JM, Buch PJ, Zhang SS, Fong TS, Hong TT & Shaw RM (2012). Actin cytoskeleton rest stops regulate anterograde traffic of connexin 43 vesicles to the plasma membrane. *Circ Res* **110**, 978–989.
- Smyth JW, Zhang SS, Sanchez JM, Lamouille S, Vogan JM, Hesketh GG, Hong T, Tomaselli GF & Shaw RM (2014). A 14-3-3 mode-1 binding motif initiates gap junction internalization during acute cardiac ischemia. *Traffic* **15**, 684–699.
- Tan HL, Kupersmidt S, Zhang R, Stepanovic S, Roden DM, Wilde AA, Anderson ME & Balsler JR (2002). A calcium sensor in the sodium channel modulates cardiac excitability. *Nature* **415**, 442–447.
- Undrovinas AI, Maltsev VA, Kyle JW, Silverman N & Sabbah HN (2002). Gating of the late Na<sup>+</sup> channel in normal and failing human myocardium. *J Mol Cell Cardiol* **34**, 1477–1489.
- Valdivia CR, Chu WW, Pu J, Foell JD, Haworth RA, Wolff MR, Kamp TJ & Makielski JC (2005). Increased late sodium current in myocytes from a canine heart failure model and from failing human heart. *J Mol Cell Cardiol* **38**, 475–483.
- Van Petegem F, Lobo PA & Ahern CA (2012). Seeing the forest through the trees: towards a unified view on physiological calcium regulation of voltage-gated sodium channels. *Biophys J* **103**, 2243–2251.
- Vargas E, Yarov-Yarovoy V, Khalili-Araghi F, Catterall WA, Klein ML, Tarek M, Lindahl E, Schulten K, Perozo E, Bezanilla F & Roux B (2012). An emerging consensus on voltage-dependent gating from computational modeling and molecular dynamics simulations. *J Gen Physiol* **140**, 587–594.
- Veldkamp MW, Viswanathan PC, Bezzina C, Baartscheer A, Wilde AAM & Balsler JR (2000). Two distinct congenital arrhythmias evoked by a multidysfunctional Na<sup>+</sup> channel. *Circ Res* **86**, e91–e97.
- Wagner S, Dybkova N, Rasenack EC, Jacobshagen C, Fabritz L, Kirchhof P, Maier SK, Zhang T, Hasenfuss G, Brown JH, Bers DM & Maier LS (2006). Ca<sup>2+</sup>/calmodulin-dependent protein kinase II regulates cardiac Na<sup>+</sup> channels. *J Clin Invest* **116**, 3127–3138.
- Wagner S, Hacker E, Grandi E, Weber SL, Dybkova N, Sossalla S, Sowa T, Fabritz L, Kirchhof P, Bers DM & Maier LS (2009). Ca/calmodulin kinase II differentially modulates potassium currents. *Circ Arrhythm Electrophysiol* **2**, 285–294.
- Wagner S, Ruff HM, Weber SL, Bellmann S, Sowa T, Schulte T, Anderson ME, Grandi E, Bers DM, Backs J, Belardinelli L & Maier LS (2011). Reactive oxygen species-activated Ca/calmodulin kinase IIδ is required for late I<sub>Na</sub> augmentation leading to cellular Na and Ca overload. *Circ Res* **108**, 555–565.
- Walker JR, Novick PA, Parsons WH, McGregor M, Zablocki J, Pande VS & Du Bois J (2012). Marked difference in saxitoxin and tetrodotoxin affinity for the human nociceptive voltage-gated sodium channel (Na<sub>v</sub>1.7) [corrected]. *Proc Natl Acad Sci U S A* **109**, 18102–18107.
- Wang C, Hennessey JA, Kirkton RD, Wang C, Graham V, Puranam RS, Rosenberg PB, Bursac N & Pitt GS (2011). Fibroblast growth factor homologous factor 13 regulates Na<sup>+</sup> channels and conduction velocity in murine hearts. *Circ Res* **109**, 775–782.
- Westenbroek RE, Bischoff S, Fu Y, Maier SK, Catterall WA & Scheuer T (2013). Localization of sodium channel subtypes in mouse ventricular myocytes using quantitative immunocytochemistry. *J Mol Cell Cardiol* **64**, 69–78.
- Yang T, Atack TC, Stroud DM, Zhang W, Hall L & Roden DM (2012). Blocking Scn10a channels in heart reduces late sodium current and is antiarrhythmic. *Circ Res* **111**, 322–332.
- Yao L, Fan P, Jiang Z, Viatchenko-Karpinski S, Wu Y, Kornyejev D, Hirakawa R, Budas GR, Rajamani S, Shryock JC & Belardinelli L (2011). Na<sub>v</sub>1.5-dependent persistent Na<sup>+</sup> influx activates CaMKII in rat ventricular myocytes and N<sub>1325</sub>S mice. *Am J Physiol Cell Physiol* **301**, C577–C586.
- Yarov-Yarovoy V, Brown J, Sharp EM, Clare JJ, Scheuer T & Catterall WA (2001). Molecular determinants of voltage-dependent gating and binding of pore-blocking drugs in transmembrane segment IIIIS6 of the Na<sup>+</sup> channel αsubunit. *J Biol Chem* **276**, 20–27.
- Yarov-Yarovoy V, Decaen PG, Westenbroek RE, Pan CY, Scheuer T, Baker D & Catterall WA (2012). Structural basis for gating charge movement in the voltage sensor of a sodium channel. *Proc Natl Acad Sci U S A* **109**, E93–E102.
- Yarov-Yarovoy V, McPhee JC, Idsvoog D, Pate C, Scheuer T & Catterall WA (2002). Role of amino acid residues in transmembrane segments IS6 and IIS6 of the Na<sup>+</sup> channel αsubunit in voltage-dependent gating and drug block. *J Biol Chem* **277**, 35393–35401.
- Zaza A, Belardinelli L & Shryock JC (2008). Pathophysiology and pharmacology of the cardiac ‘late sodium current’. *Pharmacol Ther* **119**, 326–339.
- Zhang DM, Chai Y, Erickson JR, Brown JH, Bers DM & Lin YF (2014). Intracellular signalling mechanism responsible for modulation of sarcolemmal ATP-sensitive potassium channels by nitric oxide in ventricular cardiomyocytes. *J Physiol* **592**, 971–990.
- Zhang MM, Green BR, Catlin P, Fiedler B, Azam L, Chadwick A, Terlau H, McArthur JR, French RJ, Gulyas J, Rivier JE, Smith BJ, Norton RS, Olivera BM, Yoshikami D & Bulaj G (2007). Structure/function characterization of micro-conotoxin KIIIA, an analgesic, nearly irreversible blocker of mammalian neuronal sodium channels. *J Biol Chem* **282**, 30699–30706.
- Zhang SS, Hong S, Kléber AG, Lee LP & Shaw RM (2014). A micropatterning approach for imaging dynamic Cx43 trafficking to cell-cell borders. *FEBS Lett* **588**, 1439–1445.
- Zhang X, Ren W, DeCaen P, Yan C, Tao X, Tang L, Wang J, Hasegawa K, Kumasaka T, He J, Clapham DE & Yan N (2012). Crystal structure of an orthologue of the NaChBac voltage-gated sodium channel. *Nature* **486**, 130–134.

## Additional information

### Competing interests

None declared.

**Funding**

The authors acknowledge grant support from the National Institutes of Health (R13HL110618 to Y.C. and D.M.B. and P01-HL080101 to D.M.B.) and additional grants to other authors that allowed them to participate. Sponsors who subsidized conference costs can be found on the conference website.

**Acknowledgements**

We thank the symposium organizers, Advisory Board and all conference participants for their contributions to the scientific exchange and constructive discussions. For conference information, see <https://basicscience.ucdmc.ucdavis.edu/ucd-cvs-2014/index.html>.